

NELSON COUNTY, VA

Comprehensive Plan Update



Public Input Results Forum | October 16, 2022





What is a Comprehensive Plan?



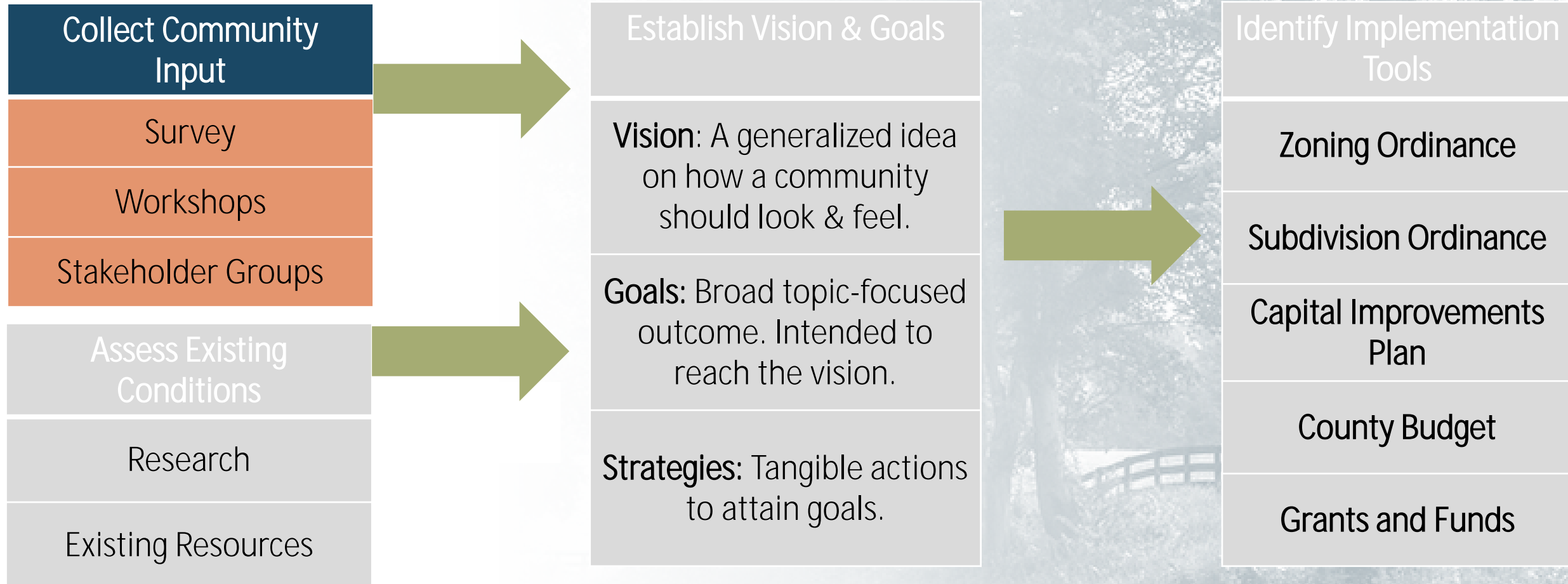
What is a Comprehensive Plan?

q A long-range planning document and decision-making guide

q A **community-guided** vision for the future



How do we Update the Plan?





How is the Community Involved?

How are CITIZENS Involved?

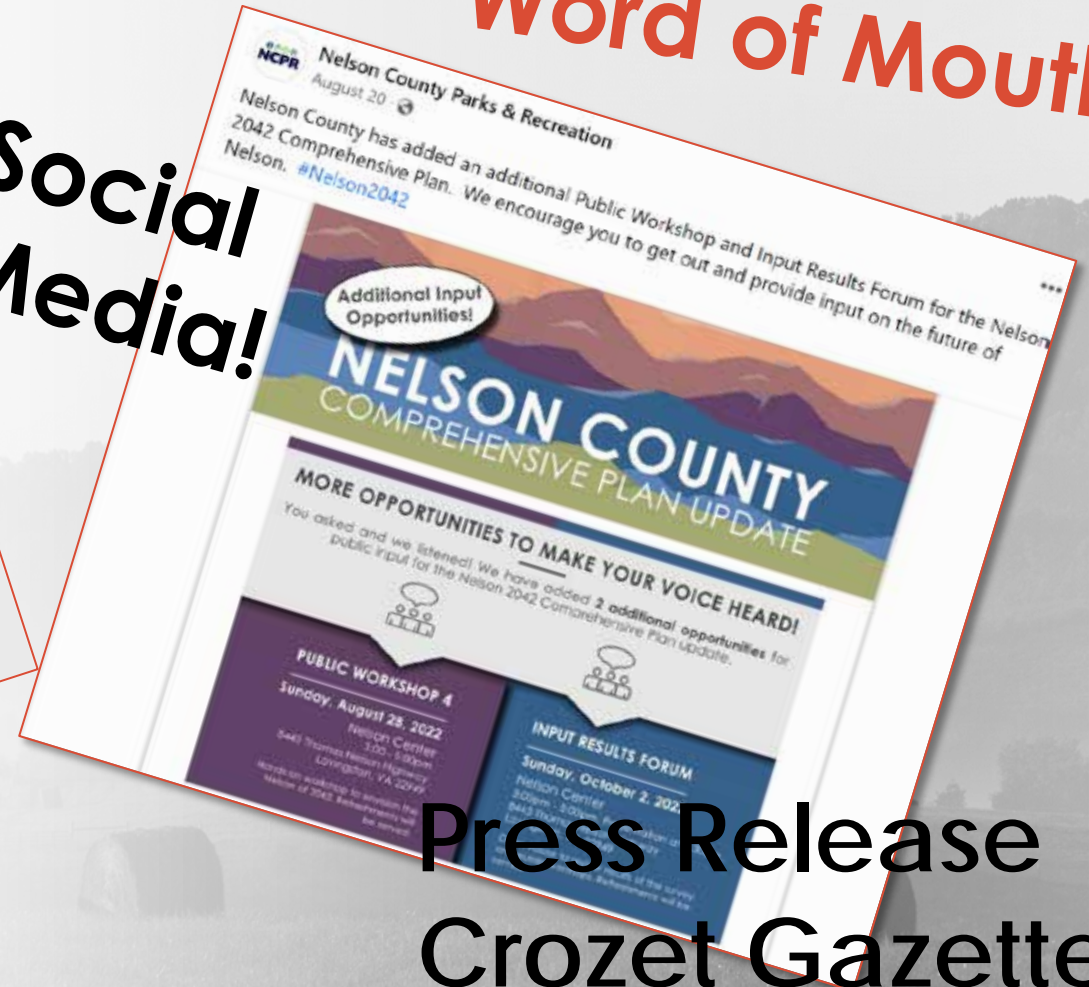
- ✓ Youth Art Challenge | On Going
- ✓ Online Survey | July – August
- ✓ Stakeholder Listening Sessions | July – August
- ✓ Workshop #1,2,3,4 | July - August
- ✓ Public Input Forum | October
- ✓ Open House & Public Hearings | Summer 2023

How did we Get the Word Out?

Website!
www.nelson2042.com



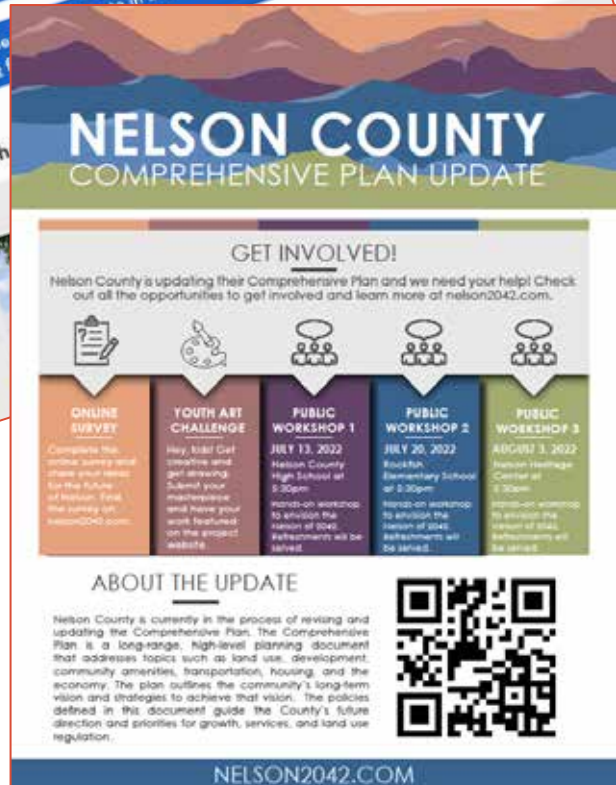
Social Media!

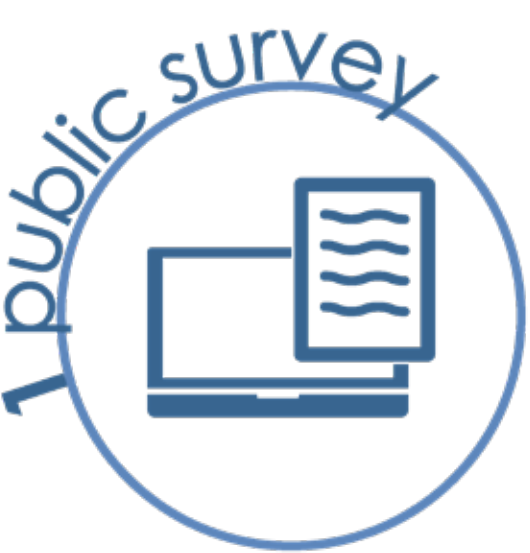


Press Release
Crozet Gazette

CBS 19 News
Nelson County Times

Flyers and
Post Cards!





= over **1,000** people participating



What Did The Community Have to Say?

A word cloud featuring various adjectives and nouns in different colors and sizes. The words are arranged in a roughly circular pattern, with some words being significantly larger than others. The colors include shades of blue, green, orange, and purple. The words are: environment, welcoming, awesome, beautiful, underserved, tranquil, heaven, funtacular, special, old, serene, quiet, great, improvement, agritourism, natural, home, lush, relaxing, rural, wonderful, scenic, conflicted, different, hug, beauty, unspoiled, unique, historic, friendly, peaceful, brutal, breathtaking, groovy, treasure, pristine, livable, country, lovable, hot, community, and bucolic.

environment
welcoming
awesome
beautiful
underserved
tranquil
heaven
funtacular
special
old
serene
quiet
great
improvement
agritourism
natural
home
lush
relaxing
rural
wonderful
scenic
conflicted
different
hug
beauty
unspoiled
unique
historic
friendly
peaceful
brutal
breathtaking
groovy
treasure
pristine
livable
country
lovable
hot
community
bucolic

PLAN +
PROVIDE
EQUITABLY
FOR
EVERYONE

DIVERSIFY +
BOLSTER
THE LOCAL
ECONOMY

THE
BIG
IDEAS

IMPROVE +
EXPAND
VITAL
COMMUNITY
SERVICES

PROTECT +
CONNECT TO
OUR RURAL
ENVIRONMENT



Nelson County 2042 Stakeholder Sessions

4 Listening Sessions with Industry Professionals & Experts



*Housing &
Development*



*Hospitality,
Lodging &
Tourism*



*Agriculture &
Agritourism*



*Community
Groups &
Nonprofits*



Housing & Development

- ü Lack of affordable housing
- ü Lack of amenities to attract and retain families
- ü Lack of water and sewer infrastructure limits development



Hospitality, Lodging & Tourism

- ü There are few career-oriented job opportunities
- ü Service & tourism employees must commute into Nelson because of housing shortage



Agriculture & Agritourism

- ü Loss of productive farmland
- ü Few healthcare services and amenities
- ü Lack of transportation choices



Community Groups & Nonprofits

Nelson County 2042 Community Survey

July 1 – August 31

AVAILABLE ONLINE AND IN PAPER FORM
AT GOVERNMENT BUILDINGS, CHURCHES,
BUSINESSES, COMMUNITY CENTERS, AND
OTHER LOCATIONS!

Nelson County Comprehensive Plan Update 2022 Community Survey

Introduction
This survey is an opportunity for residents and neighbors of Nelson County to share their thoughts and opinions on the future growth and development of the County. Your feedback will be used by the County's staff, Planning Commission, and Board of Supervisors as we work to update the County's Comprehensive Plan.

What is a Comprehensive Plan?
The Comprehensive Plan is Nelson County's most important document regarding growth and development. It establishes government policy to guide public and private activities as they relate to land use and community facilities. The Plan is the basis for land development regulations; capital improvements for schools, parks, and other public uses; transportation investments; and environmental and historic resource protection. All Virginia localities are required to adopt a Comprehensive Plan and review the plan for necessary updates every five years.

Survey Information
→ **Return completed surveys by August 15, 2022**, to Nelson County Planning & Zoning, 80 Front Street, Lovingson, VA 22949
→ You can also take the survey online at www.surveymonkey.com/r/Nelson_Comp_Plan
→ Questions? Visit www.Nelson2042.com or Contact **Dylan Bishop, Planning & Zoning Director**, at (434)263-7091 or dbishop@nelsoncountyva.org

Survey Questions

1. What do you value most about Nelson County? (choose up to three):

<input type="checkbox"/> Quality housing	<input type="checkbox"/> Natural environment
<input type="checkbox"/> Tourism & agritourism (e.g., wineries, breweries)	<input type="checkbox"/> Education system
<input type="checkbox"/> Agriculture and forestry industries	<input type="checkbox"/> Recreation opportunities
<input type="checkbox"/> Cost of living	<input type="checkbox"/> Rural character and open space
<input type="checkbox"/> Sense of community	<input type="checkbox"/> Community facilities and services
<input type="checkbox"/> Employment opportunities	<input type="checkbox"/> Local history and culture
<input type="checkbox"/> Community safety	<input type="checkbox"/> Other: _____

2. What concerns you the most about Nelson County's future? (choose up to three):

<input type="checkbox"/> Development and population growth	<input type="checkbox"/> Quality of public schools
<input type="checkbox"/> Job opportunities	<input type="checkbox"/> Public safety and emergency services
<input type="checkbox"/> Road maintenance, safety and/or traffic	<input type="checkbox"/> Availability of utility services
<input type="checkbox"/> Loss of farms, forestry, and quarries	<input type="checkbox"/> Access to community services
<input type="checkbox"/> Housing – cost and/or quality	<input type="checkbox"/> Keeping taxes low
<input type="checkbox"/> Damage to the environment	<input type="checkbox"/> Other: _____



885

Survey
Responses



84%

Full Time Resident



4%

Part Time Resident



20%

Lived Here for
40+ Years

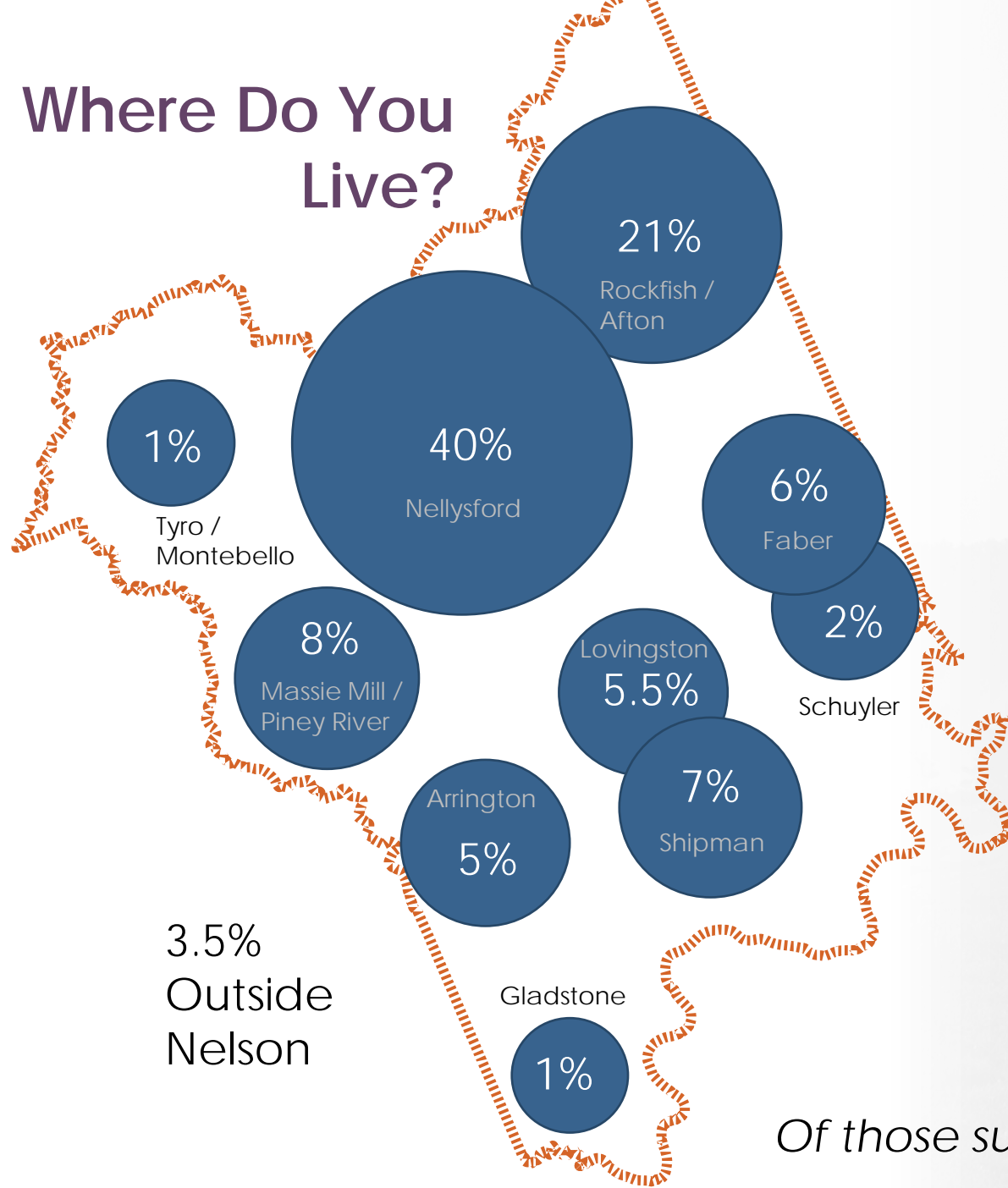


18%

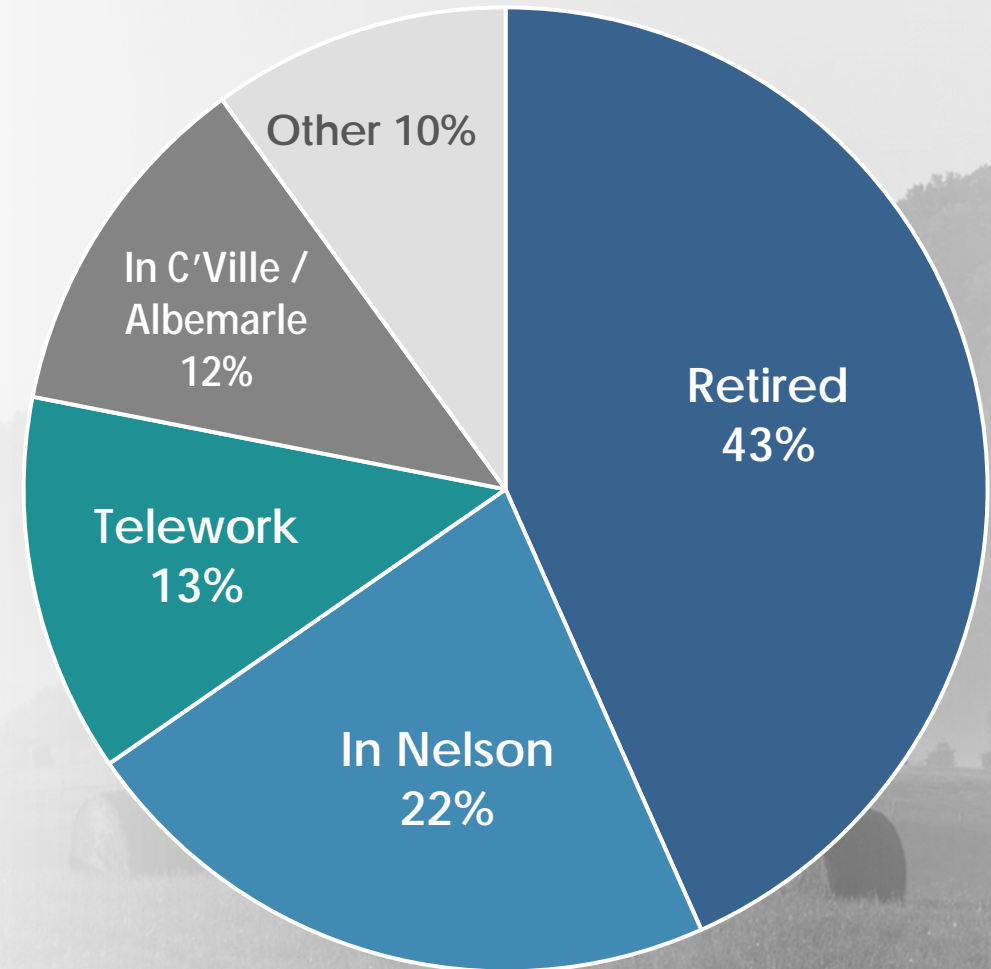
Lived Here for
Less Than 5 Years

Of those survey respondents who answered this question

Where Do You Live?



Where Do You Work?



Of those survey respondents who answered this question

What should Nelson focus on improving?



Resource
Preservation (55%)



Educational
Improvements (30%)



Affordable/Quality
Housing (28%)



Recreation & Services
(27%)

“If you are looking for a family friendly activity in Nelson - there aren't many options. No playgrounds, movie theatres, water parks, etc. It is possible to preserve the culture of Nelson as a rural community while still providing families with the resources they need to care for their families.”

What concerns you most about the future of Nelson?



New Growth
& Development (58%)



Environmental
Damage (40%)

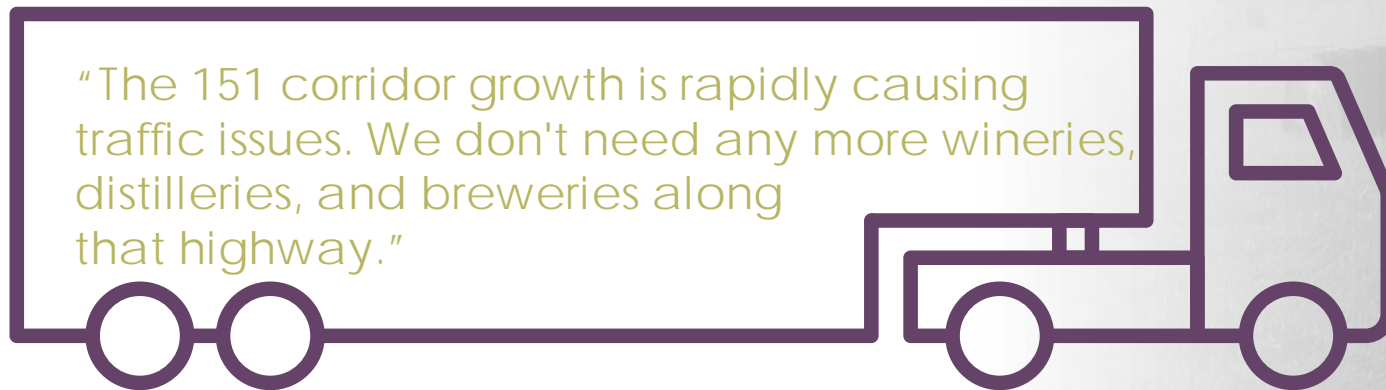


Loss of Productive
Agriculture (37%)



Housing Cost &
Quality (24%)

Traffic & Safety



Jobs & Employment



"I'd like to find a good
paying job in Nelson"

Nelson County 2042 Public Workshops

July 13 | Nelson High School

July 20 | Rockfish Elementary

August 3 | Nelson Heritage Center

August 28 | Nelson Center

+150

Workshop Participants





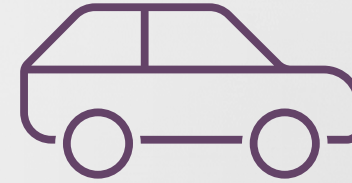
Growth & Development

- ü Protect the County's rural character
- ü Address issues related to affordable housing
- ü Provide more commercial and retail opportunities



Recreation & Outdoors

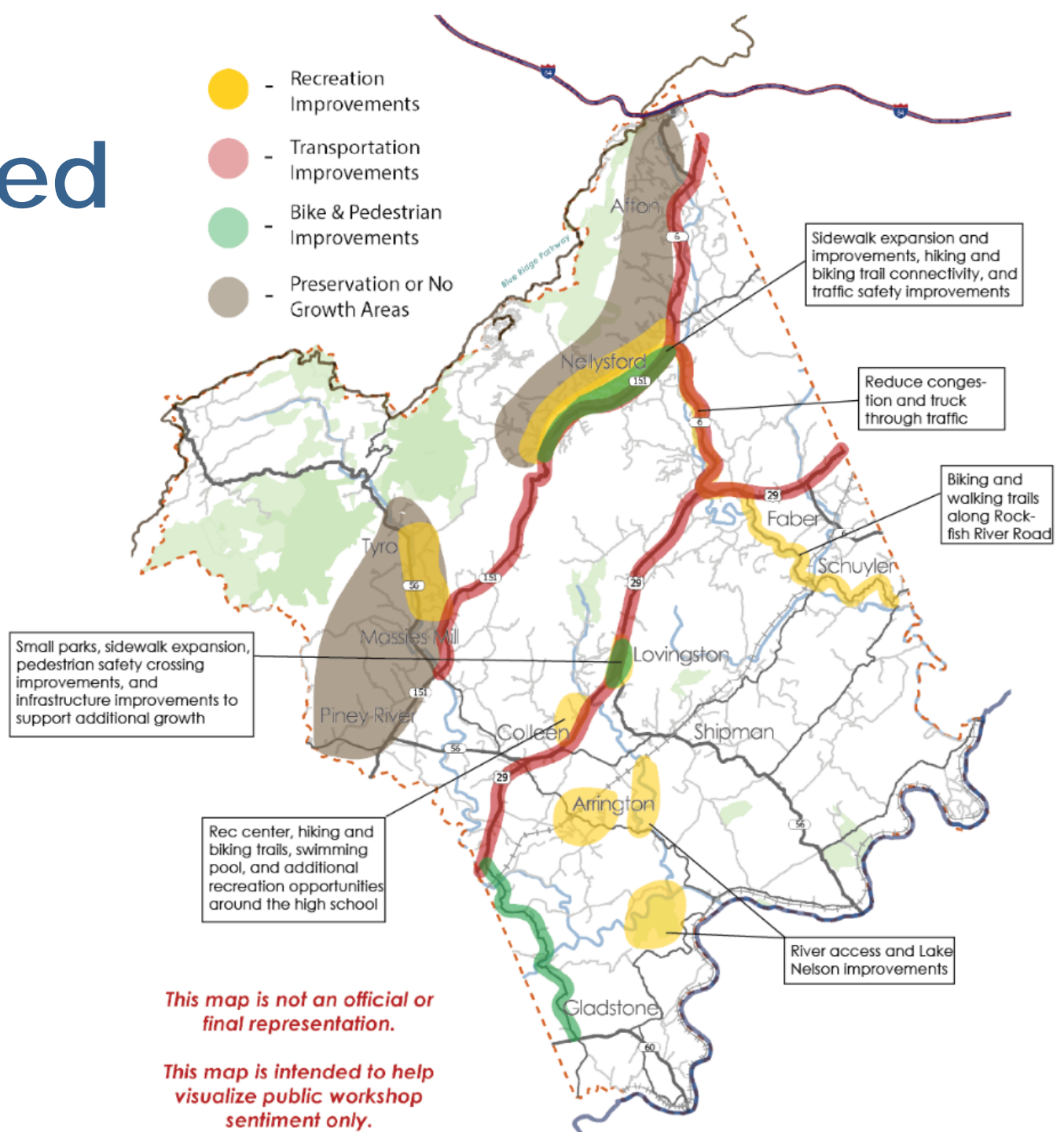
- ü Create recreation opportunities for youth
- ü Provide public access to rivers
- ü Expand and connect trail networks



Transportation & Infrastructure

- ü Improve safety and congestion along 151
- ü Improve and expand water and sewer infrastructure
- ü Create more alternative modes of transportation

Where do we need Parks, Trails, and Transportation Improvements?



What kind of growth do we want and where?

Commercial

Residential

Area	Restaurants & Cafes	Drive Thru Restaurants and	Events & Music Entertainment	Mixed-Use	Tourism & Agritourism	Grocers or Farm Markets	Retail & Specialty Shops	Offices	Community Services	Light Industrial	Hotels & Lodging	Heavy Industrial
Lovington	13	8	9	10	7	11	13	12	11	5	7	3
Colleen	5	6	5	7	7	8	8	7	7	8	4	4
Shipman	3	3	3	3	4	5	4	3	4	3	2	2
Faber	2	2	2	2	2	2	2	2	2	2	2	2
Schuyler	7	5	5	6	5	5	5	5	5	3	3	3

Area	Single Family Dwelling	Duplex or Townhomes	Apartments or Condos	Mixed-use	Senior Housing	Accessory Dwellings	Short-term Rentals
Lovington	6	7	8	7	6	4	4
Colleen	5	6	6	5	4	3	3
Shipman	5	5	5	4	4	2	2
Faber	3	3	1	2	1	2	2
Schuyler	5	4	4	5	3	4	4

Next Steps

- q Drafting and Joint Worksessions | October 2022 – May 2023
- q Public Open House | Summer 2023

Contact Us

Dylan Bishop

dbishop@nelsoncounty.org

434.263.7091

Comprehensive Plan Update materials can be found online at

www.nelson2042.com

Comments can be submitted to Nelson County staff members, at the website above,
or by following the link below:

<https://www.surveymonkey.com/r/NelsonResultsComments>

